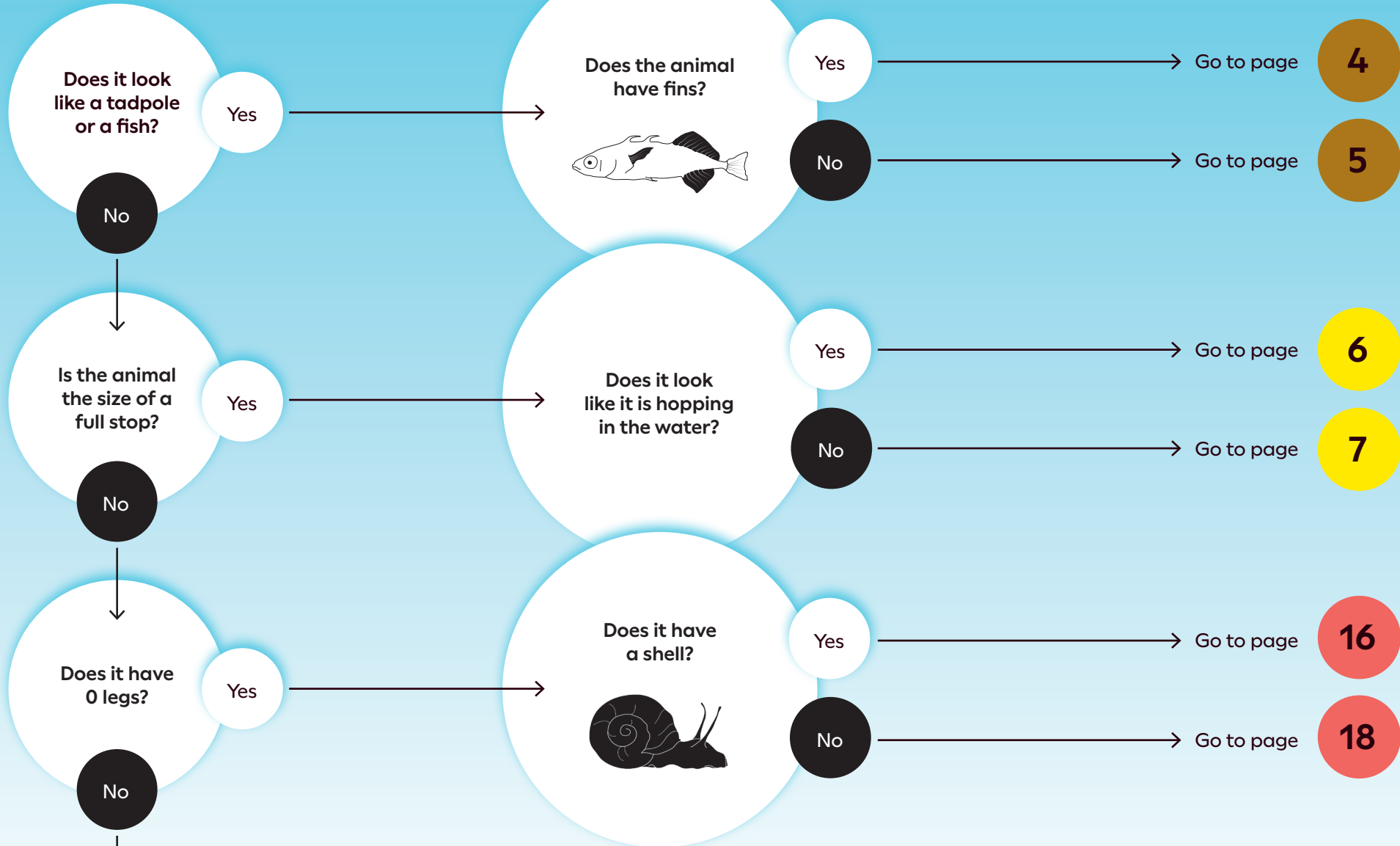


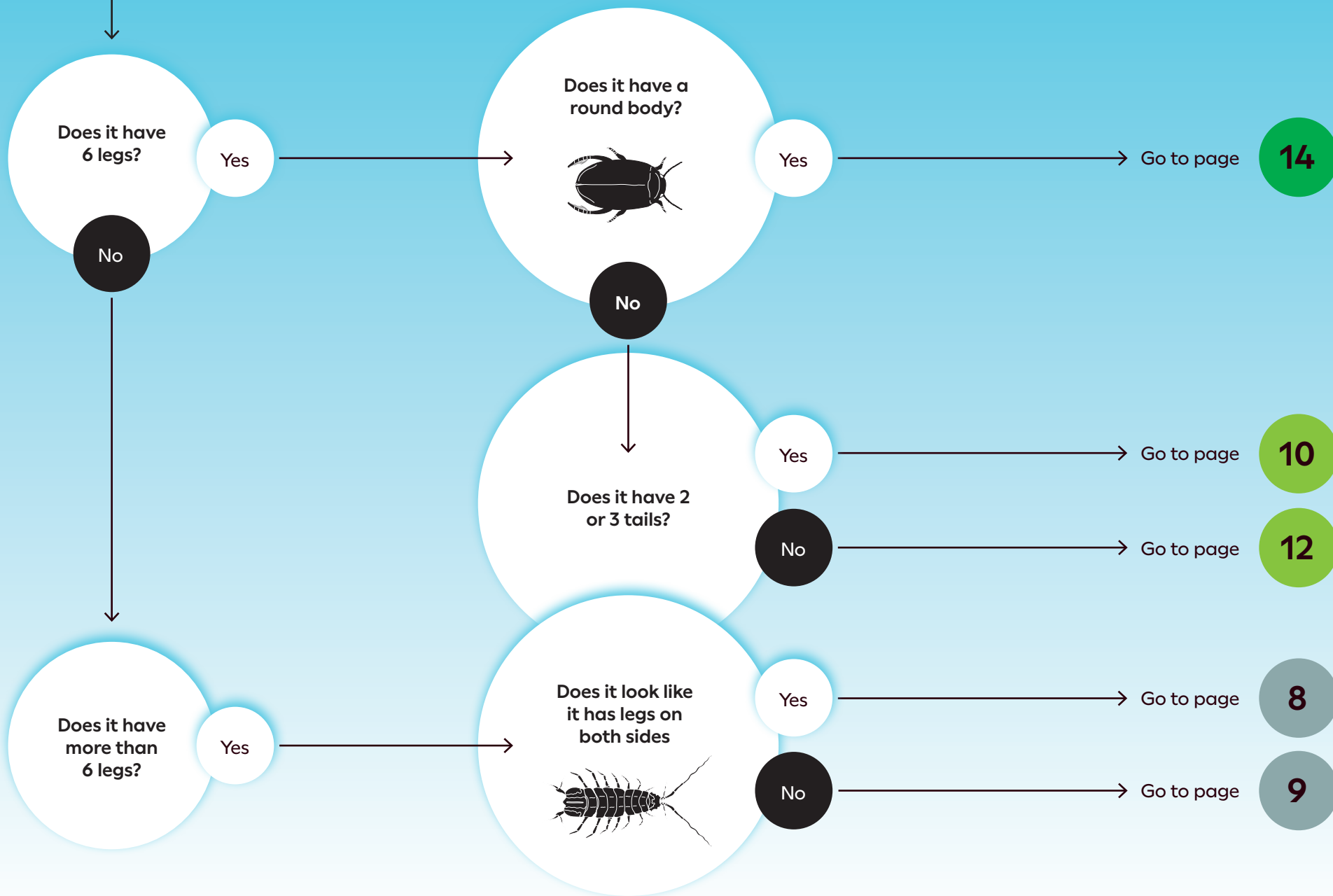
# Pond Animal Guide



Urban  
Nature  
Project

# Start here





## 3-spined stickleback

These fish have 2 or 3 small spikes on their back. When it is time to lay eggs the male's belly turns red.

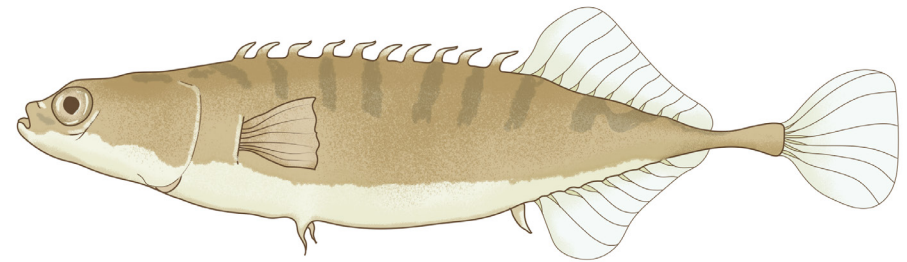
**Food:** Animals



## 9-spined stickleback

These fish have 9 or 10 small spikes on their back. They can be brownish or silvery. Sometimes their stripes are hard to see.

**Food:** Animals

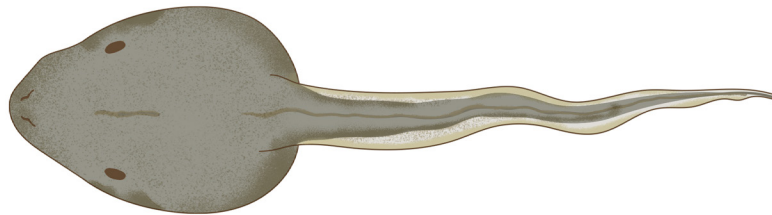


## Tadpoles and fish

### Frog or toad tadpole

Tadpoles eat plants when they first hatch. As they get older they grow arms and legs. They also start eating other animals.

**Food:** Animals and Plants

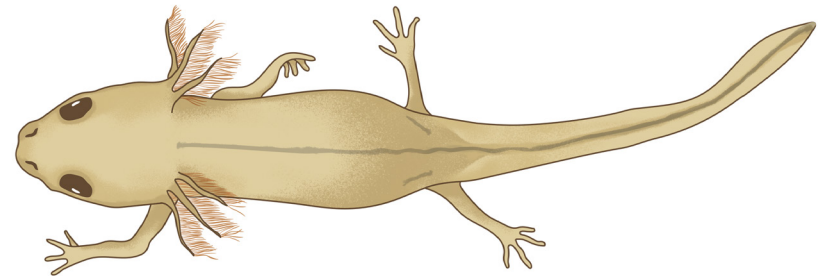


5

### Newt tadpole

Newt tadpoles are also called 'efts'. They have no legs and eat plants when they first hatch. As they get older they grow arms and legs and start eating animals.

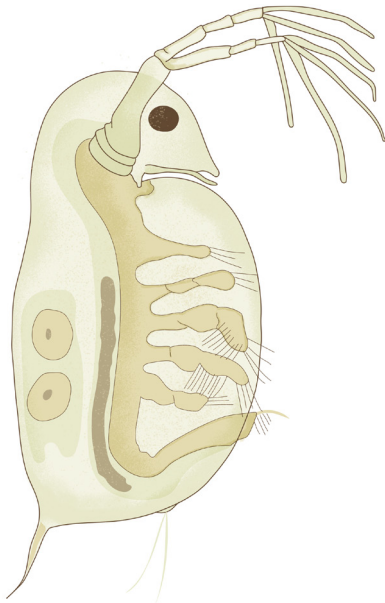
**Food:** Animals and Plants



## Water flea

Water fleas look like they move by jumping through the water. Sometimes you can see eggs inside their body.

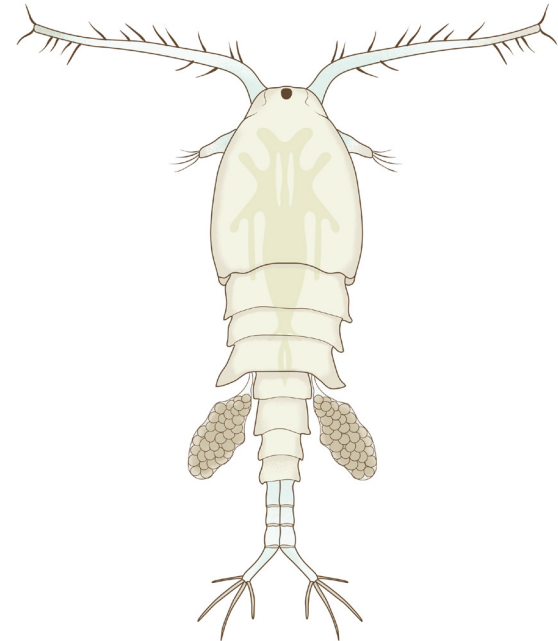
**Food:** Microscopic animals and plants



## Cyclops

These animals look longer and thinner than water fleas. Sometimes they have lumps of eggs on their tail.

**Food:** Microscopic animals and plants

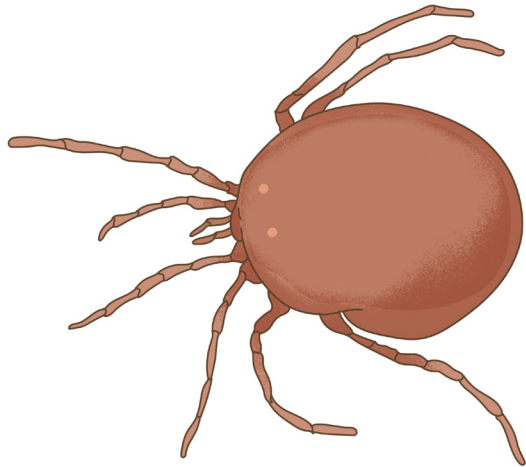


## Tiny animals

### Water mite

Water mites have round bodies like a ball. They come in different colours and patterns. Water mites are easily confused with diving beetles. Diving beetles usually have more oval-shaped bodies.

**Food:** Tiny animals

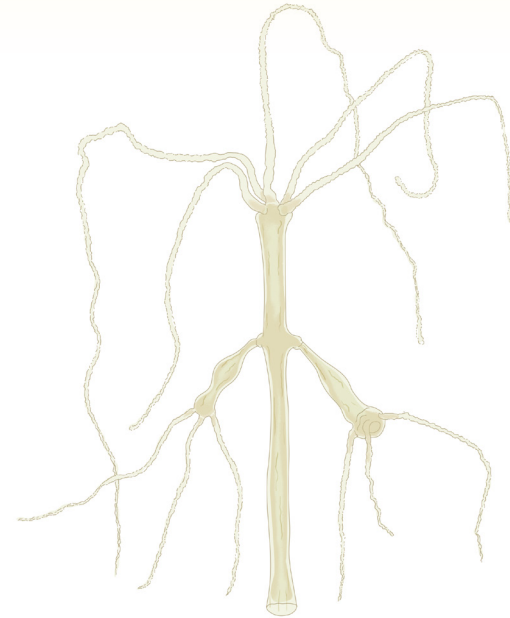


7

### Hydra

Usually green or brown with a stalk and tentacles on top. Sometimes they have mini-versions sticking to their side. These are baby hydras growing out from the side of the adult.

**Food:** Tiny animals



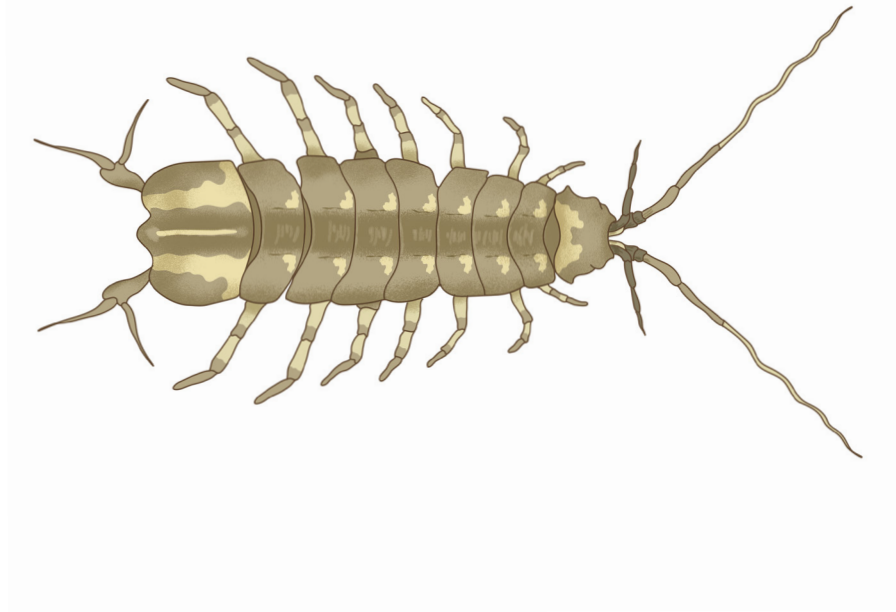
More than 6 legs

More than 6 legs

## Water hoglouse

These animals look like woodlice. Their bodies are usually very flat. When they are getting ready to lay eggs, the male carries the female underneath for a while.

**Food:** Dead things

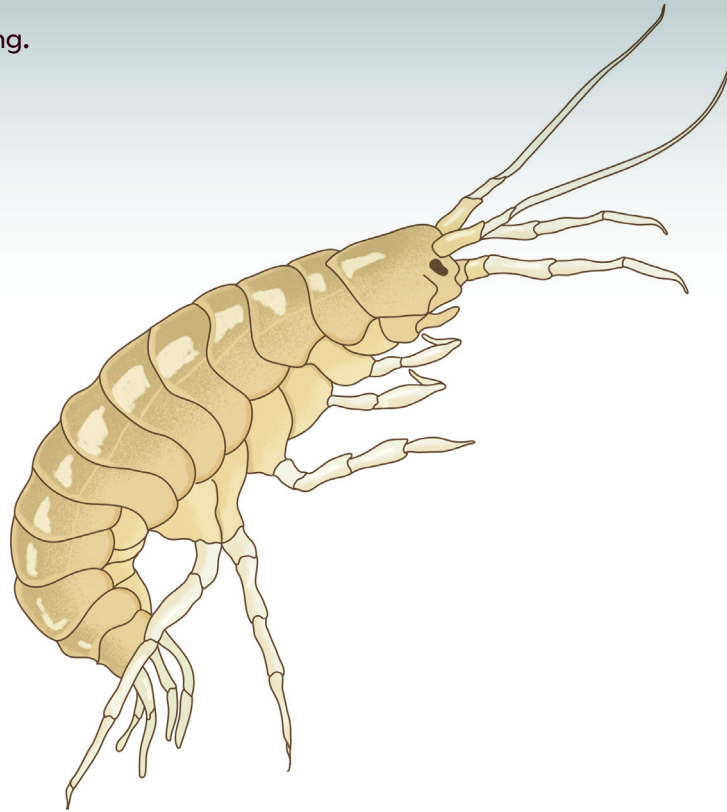


More than 6 legs

## Freshwater shrimp

These fast animals often swim and rest on their side.  
Their tail is usually curled under their body when resting.

**Food:** Dead things



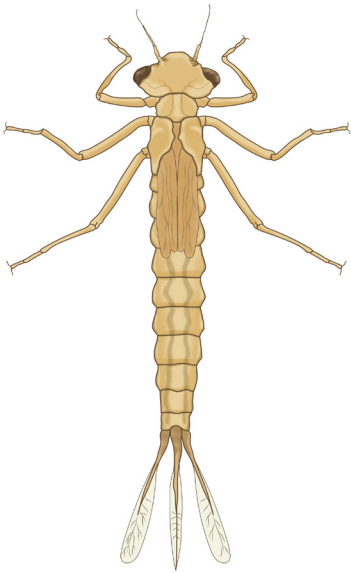
6 legs

Animals with a long body and 2 or 3 tails

## Damselfly nymph

Usually green or brown. These young damselflies walk slowly or swim with a side-to-side wiggle.

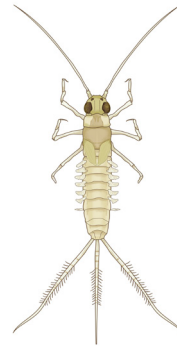
**Food:** Animals



## Mayfly nymph

Mayfly nymphs sometimes have short antennae. They usually have three tails and gills along the sides of their body. They swim by wiggling up and down.

**Food:** Plants and dead things



## Screech beetle larva

These are young screech beetles. They can swim quickly with their legs.

**Food:** Animals



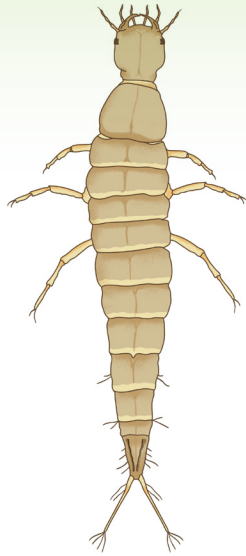
6 legs

Animals with a long body and 2 or 3 tails

## Diving beetle larva

These young diving beetles come in many sizes and colours. They swim using their legs. Sometimes they can be seen with their tail at the surface to breathe.

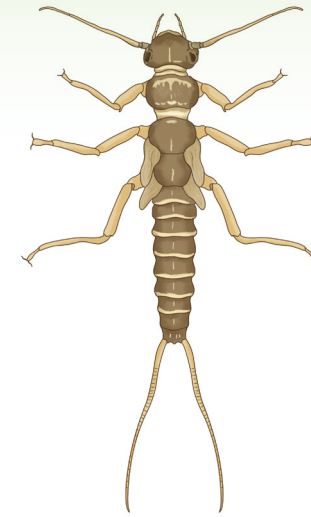
**Food:** Animals



## Stonefly nymph

These young stoneflies often have very flat bodies. They eat plants when they are small, but as they grow they start to eat other animals.

**Food:** Animals, plants, and dead things



11

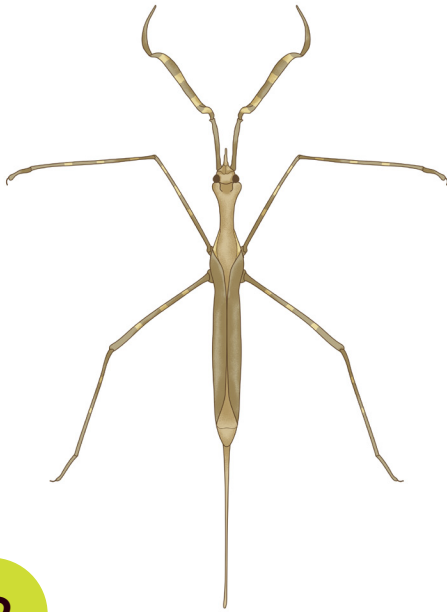
Long body and 1 or no tails

Long body and 1 or no tails

## Water stick insect

These animals walk or swim slowly with their back legs. They often keep their tail at the surface to breathe.

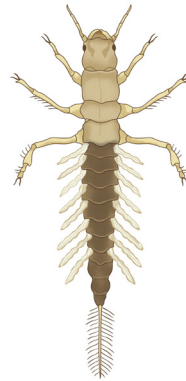
**Food:** Animals



## Alderfly lava

These are young alderflies. They have very big jaws, and feathery gills on the sides of the tail.

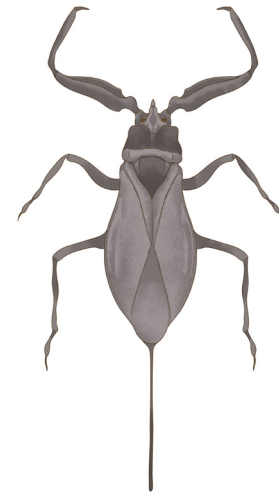
**Food:** Animals



## Water scorpion

These animals have thick front legs. They swim or walk with their thin back legs. They often keep their tail at the surface to breathe.

**Food:** Animals

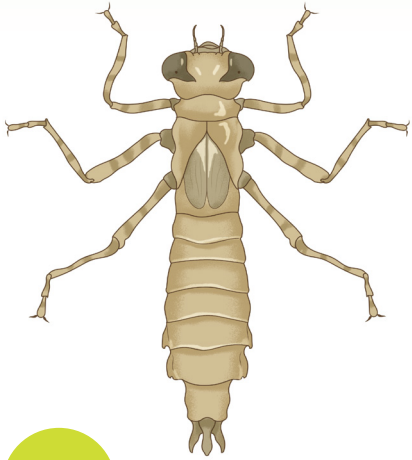


Long body and 1 or no tails

## Dragonfly nymph

These young dragonflies are usually green or brown and can have stripes or patterns. Some types of dragonfly have shorter bodies.

**Food:** Animals



13

## Caddisfly larva

These young caddisflies build cases around their bodies. Different types of caddisfly make cases out of different materials.

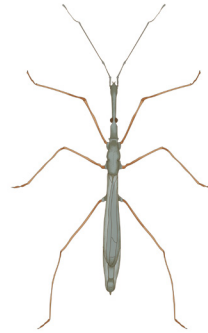
**Food:** Animals, plants, and dead things



## Water measurer

These small animals walk on top of the water. They have long thin bodies.

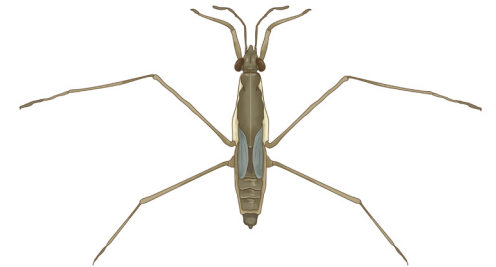
**Food:** Animals



## Pond skater

These animals sit on top of the water and quickly jump around. They have 4 long legs at the back, and 2 short legs in front.

**Food:** Animals



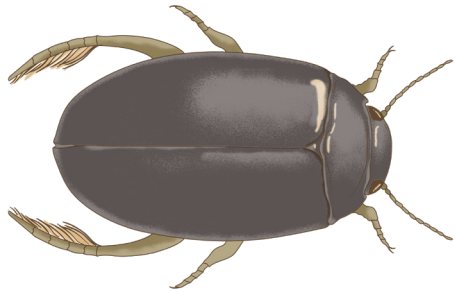
Round body

## Round body

### Diving beetles

These beetles can be big or small. They have long thin antennae.

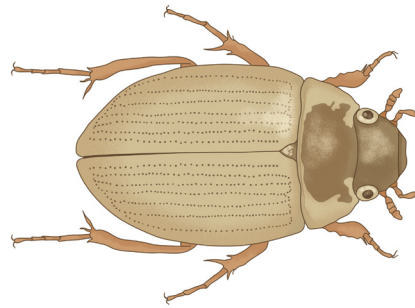
**Food:** Animals



### Scavenger beetles

These beetles can be big or small and have short antennae.

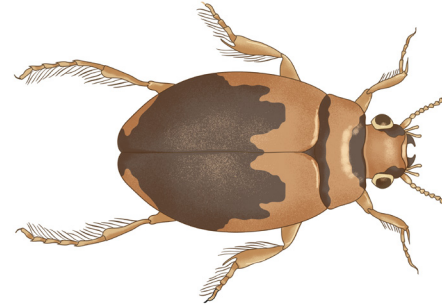
**Food:** Plants and dead things



### Screech beetle

These beetles have a small round head and very rounded backs. They can make a squeek if held.

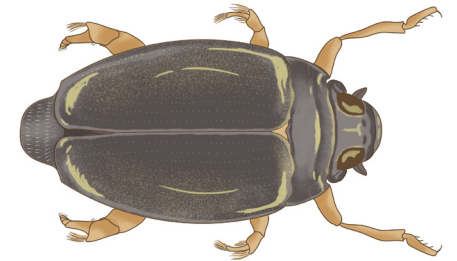
**Food:** Animals



### Whirligig beetle

Dark-coloured or black beetles that swim in circles on top of the water.

**Food:** Animals

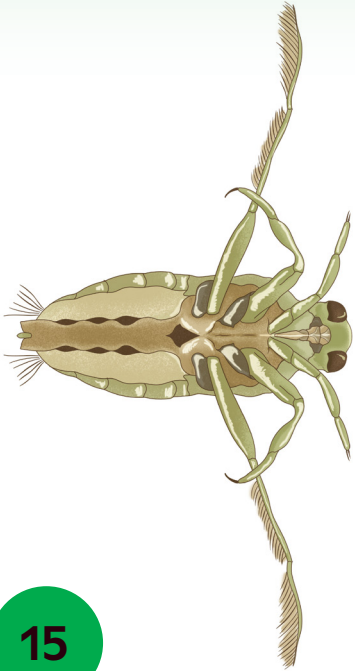


Round body

## Large backswimmer

Also called “greater water boatmen”. These animals swim on their back using their long back legs.

**Food:** Animals



## Small backswimmer

These small insects swim on their back. They have a flat head and pointed bottom.

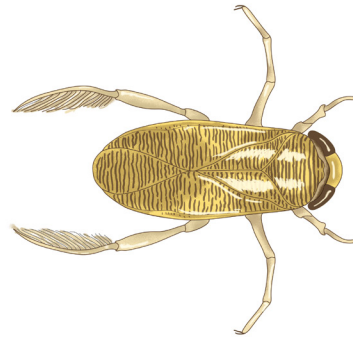
**Food:** Animals



## Lesser water boatman

These insects swim on their front using their long back legs. They often keep their front legs tucked in.

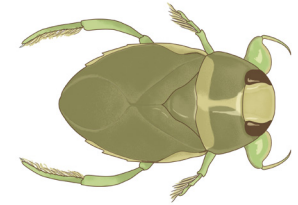
**Food:** Plants and dead plants



## Saucer bug

These insects swim on their front using long back legs. The front pair of legs is thicker than the others.

**Food:** Animals



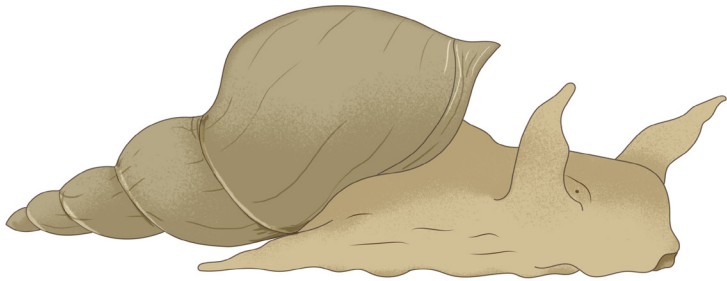
No legs

Has a shell

## Pond snail

These snails can be big or small.  
Their shells spiral to a point.

**Food:** Plants



## Ramshorn snail

These snails can be big or small.  
Their spiral shells can sometimes be very flat.

**Food:** Plants



No legs

Has a shell

## Freshwater clam

Clams hide between the two halves of their shells. They can look like pebbles or seeds. If you let them sit still they might reach out and move with a white foot.

**Food:** Microscopic animals and plants



## Freshwater limpet

These are usually very small. Their shells are very flat and do not make a spiral.

**Food:** Plants

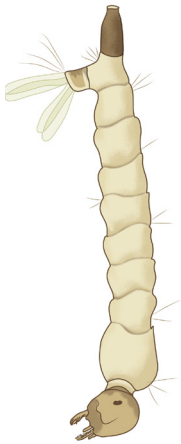


Long body

## Mosquito larva

These animals float at the top of the pond. They often have their tail at the surface to breathe.

**Food:** Microscopic plants and animals, dead things



## Rat-tailed maggot

These animals can live in very small places like puddles and holes in trees. Their tails can shrink or stretch to reach the surface if needed.

**Food:** Dead things



## Phantom midge larva

These animals are see-through. They float very still in the water.

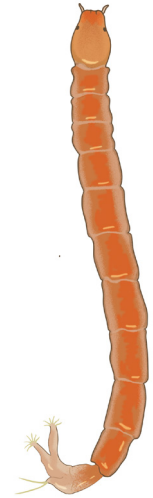
**Food:** Microscopic plants and animals



## Bloodworm (Midge larva)

These animals live at the bottom of the pond and can survive with very little oxygen. They are not always red.

**Food:** Microscopic plants and animals



## Long body

### Leech

Different types of leech can be big or small. They are usually black or brown. They can walk by 'looping' using the sucker on their tail and their mouth.

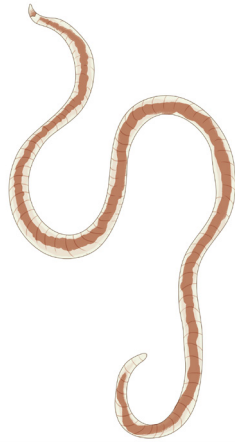
**Food:** Animals and blood



### Sludge worm

Sludge worms can grow very long, and are usually pink or red.

**Food:** Dead things



### Flatworm

These animals glide along the bottom of the pond. They are very flat and can be black, brown, or grey.

**Food:** Microscopic animals



### Roundworm

These animals are usually small, but sometimes can be long and thin like a piece of hair. They are usually white or clear.

**Food:** Microscopic animals, plants, and dead things





# Urban Nature Project

We thank all funders to the project, including those who wish to remain anonymous, and in particular express our gratitude to:

Lead sponsor



Lead donors



**THE CADOGAN CHARITY**

Supporting donors

The Wolfson\*  
Foundation

CHARLES WILSON AND  
ROWENA OLEGARIO



**Clore Duffield  
Foundation**



Supporting sponsors



**accenture**

## The Trustees and Executive Board of the Natural History Museum

With additional thanks to

Stephen and Janian Green  
Johnson Matthey  
Huo Family Foundation  
Simon and Harriet Patterson  
Kirk B Alexander  
Hussain Aga Khan

The William Brake Foundation  
Bloomberg L.P.  
City Bridge Foundation  
Dr Douglas Gurr  
Hilary Newiss  
The Portal Trust

The Hobson Charity  
Holly Smith and Neil Osborn  
Dustin Chen  
The Woosnam Foundation

